



ARCHITECTURAL

**Canal Engineering** was established in Nottingham UK in 1926 and has evolved, in recent years, into a major manufacturer and installer of quality bespoke architectural metalwork.

Our drawing/design office, works and installation teams are all employed by Canal and offer a full turnkey service.

We pride ourselves on our flexibility, skill base and professional approach to all projects and our hunger for the next challenge.

Our Nottingham based manufacturing facility, has all the latest equipment to provide a complete service for installations around the UK, Ireland and the rest of the world.

This brochure is a taste of just some of the many projects we are proud to be associated with.



**Martin Price &  
Stephen Lord**  
Directors



**Lee Hunt**  
Architectural Sales Manager



# CANAL

## KNOLLMEAD

*Materials: stainless steel, glass, stainless steel cable*

Canal design all of our structures to complement the clients requirements. This is an excellent example of the many stairs we have created using our trade mark central spine concept. The Italian broken glass treads add to the light and spacious effect.







# CANAL

## JJB SPORT

*Materials: stainless steel, powder coated mild steel.*

We have been involved in numerous installations around the country on the stunning gymnasium and retail outlets for JJB.

This installation includes the foyer balustrade, staircase, gym dais and handrails combined with various materials and finishes to complement the futuristic surroundings.









# CANAL

## FLINT MILL

*Materials: stainless steel, powder coated mild steel, glass and lighting*

This unique helical staircase is supported by a single central box-section stringer, which was formed by rolling and fully welding laser cut mild steel plate. This not only gave rigidity to the stair but also provides housing for the electric cables for the LED lighting.

The Italian broken glass treads are fully housed in a stainless steel support finished with toughened radius glass infill panels.







# CANAL



## STANLEY HOUSE

Materials: *stainless steel, oak timber, glass*

The 40mm thick timber treads have been rebated to accept 3 stainless steel strips forming an anti slip nosing. The treads are supported by 8mm thick laser profiled 'wings' which are connected to the central spine. A distinctive feature of this straight flight stair is the semi circular rest landing and curved glass infill panels.







# CANAL

## QUEENS MEDICAL CENTRE (TDC)

*Materials: stainless steel, powder coated mild steel, glass, timber.*

Within this impressive atrium, Canal manufactured and installed a straight flight staircase and a double 'piggy back' style free standing stair, combined with 150 metres of contemporary balustrade.

The 10mm thick double profiled fin design gives this balustrade its distinctive look.

The staircases are primarily constructed in powder coated mild steel. The underside of the stairs are fully enclosed, with concrete filled treads and landings finished in hardwood timber.









# CANAL

## PORSCHE

*Materials: stainless steel, powder coated mild steel, sandblasted glass.*

The Porsche feature stair is one of many car showrooms utilising the Canal Engineering approach to bespoke designs. A simple yet stylish stair using 32mm thick sand blasted glass treads supported by the central landing post and flat external stringers.

The balustrade to the stair and office space is fabricated from satin polished stainless steel and was fully assembled on site by our skilled workforce.







CANAL

Domestic





## ABINGDON ROAD

*Materials: stainless steel, walnut, glass.*

This installation gives a dramatic impact from all aspects of the residence, especially as you enter the front door

This was a challenging installation over three flights, with limited working room and access.

The solid walnut treads support the glass panels finished with a bespoke handrail manufactured to the architect's vision.

A rectangular stainless steel central spine construction combines a stylish main structural element with the natural walnut finish.

The only visible fixings are the stainless steel machined glass clamp screws. Great care was taken in the early stages to first fix all structural supports and avoid any visible signs of a mechanical fitting.



CANAL



Domestic



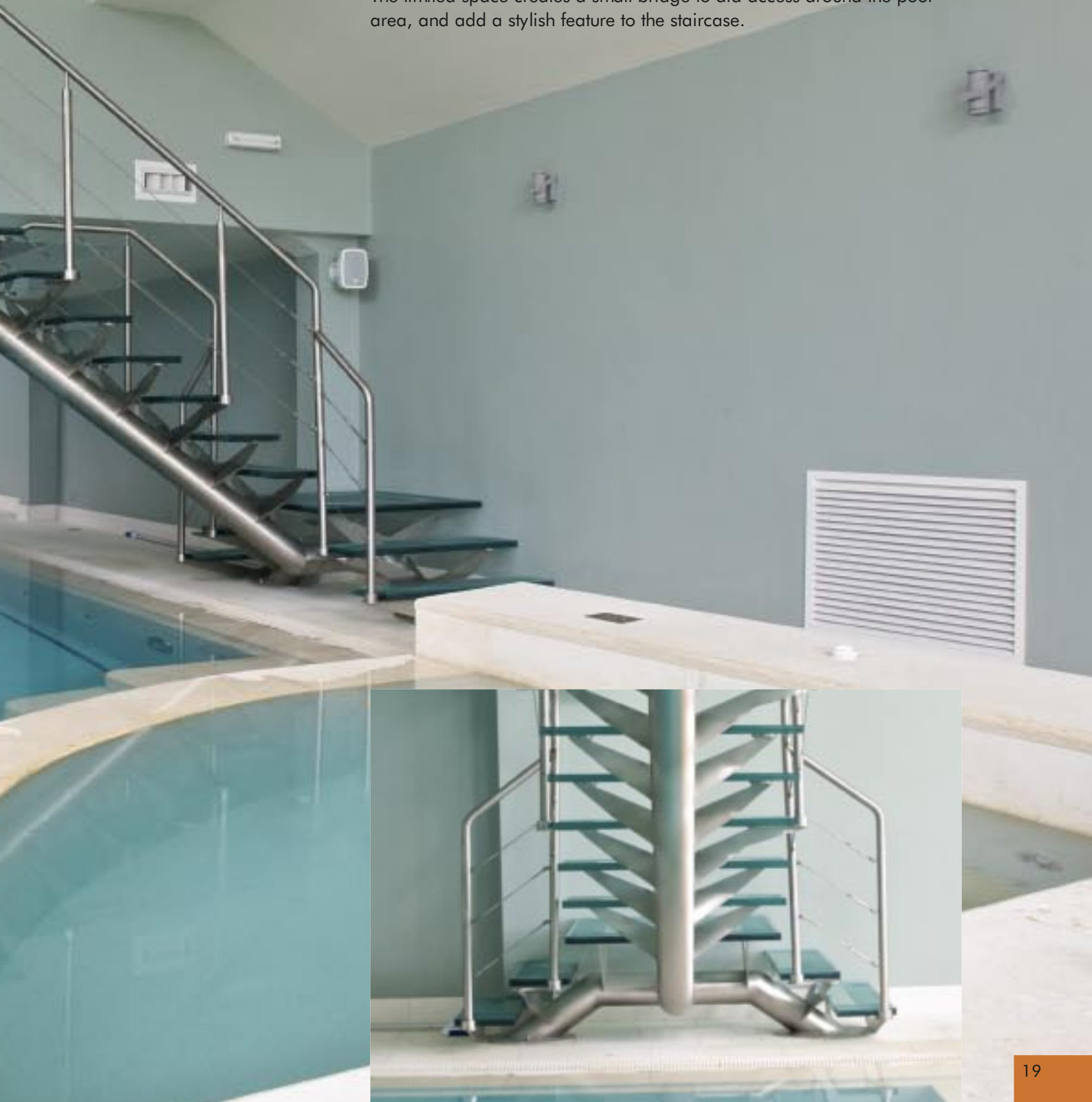
## MAPSTONE FARM

*Materials: stainless steel, glass, wire rails*

This is an excellent example of the many stairs we have created displaying a lightweight appearance yet solid in construction.

In these corrosive environments all stainless steel elements are constructed from type 316 stainless steel.

The limited space creates a small bridge to aid access around the pool area, and add a stylish feature to the staircase.



CANAL

Precision

Workshop







# CANAL

## HESCO BASTION

*Materials: stainless steel, glass, lighting*

Canals open approach to clients enables them to create many bespoke designs and features specific to their own business.

This reception stair combines many different materials, with added lighting to complete the clients brief.

The infill panels can be manufactured in various materials, colours and designs thus creating that original appearance.







# CANAL

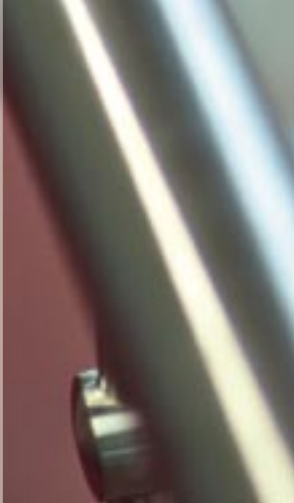
## DAVID WILSON LIBRARY

*Materials: stainless steel, glass, timber*

This is an example of how structural glass and handrail can look modern and in keeping with its surrounds.

The planning at the early stages is paramount to a successful installation as the first fix of the structural elements culminates in clean lines with no sight of any fixings.

The 25 mm thick glass has a stainless steel handrail fitted in pre drilled holes at regulation height.









CANAL

Domestic





## WEMBOROUGH ROAD

Materials: *stainless steel, glass.*

This small, but challenging, project required the manufacture and installation of a balustrade to the clients design.

The tight radius glass combined with the handrail is taking manufacturing tolerances to their limits, but we are always looking for that next challenge.



# CANAL

## DROPMORE PARK

*Materials: stainless steel, stained hardwood, glass.*

These modern apartments are all individual and exclusive designs for clients who demand high standards.

The straight flight stair leads to a suspended steel framed landing enclosed with 15mm structural glass balustrade.

The staircase was formed in stainless steel and then over skinned with a stained hard wood facia. The internal face of the stringers are exposed as satin polished stainless steel with the risers infilled by a single 16mm diameter stainless polished rod.







CANAL

## Craftsmanship





CANAL

**DAVID WILSON LIBRARY**

*Materials: stainless steel, glass.*

This impressive staircase gives a modern touch to a refurbished university library.

Structural glass and stainless steel handrail work well with the standard functional painted steel stair.

All of Canals architectural metalwork is detailed, manufactured, installed and managed by our own employees giving a turnkey service.



Commercial





## ASH RIDGE

**Materials:** *stainless steel, mild steel, oak.*

This staircase has become a major feature to the third floor extension at this property. The design brief demanded a fully cantilevered landing and part helical staircase with no visible fixings or supports.

Canal was able to achieve this floating stair by fully welding the stringers, treads and landing structure on site.

The balustrade consists of individually formed bars topped with a wooden handrail and hardwood inlay treads





## VUE @THE O2 ARENA

Materials: *stainless steel, mild steel.*

This art deco staircase is the main entrance to the multiplex cinema in this world famous venue.

The fan design is a bespoke art deco feature of the O2 arena with a chocolate brown powder coated finish.

This stair was part of a large contract carried out at the O2 arena by Canal Engineering which includes various handrail, stairs, balustrades and structural steelwork supporting TV screens and fascias.







# CANAL

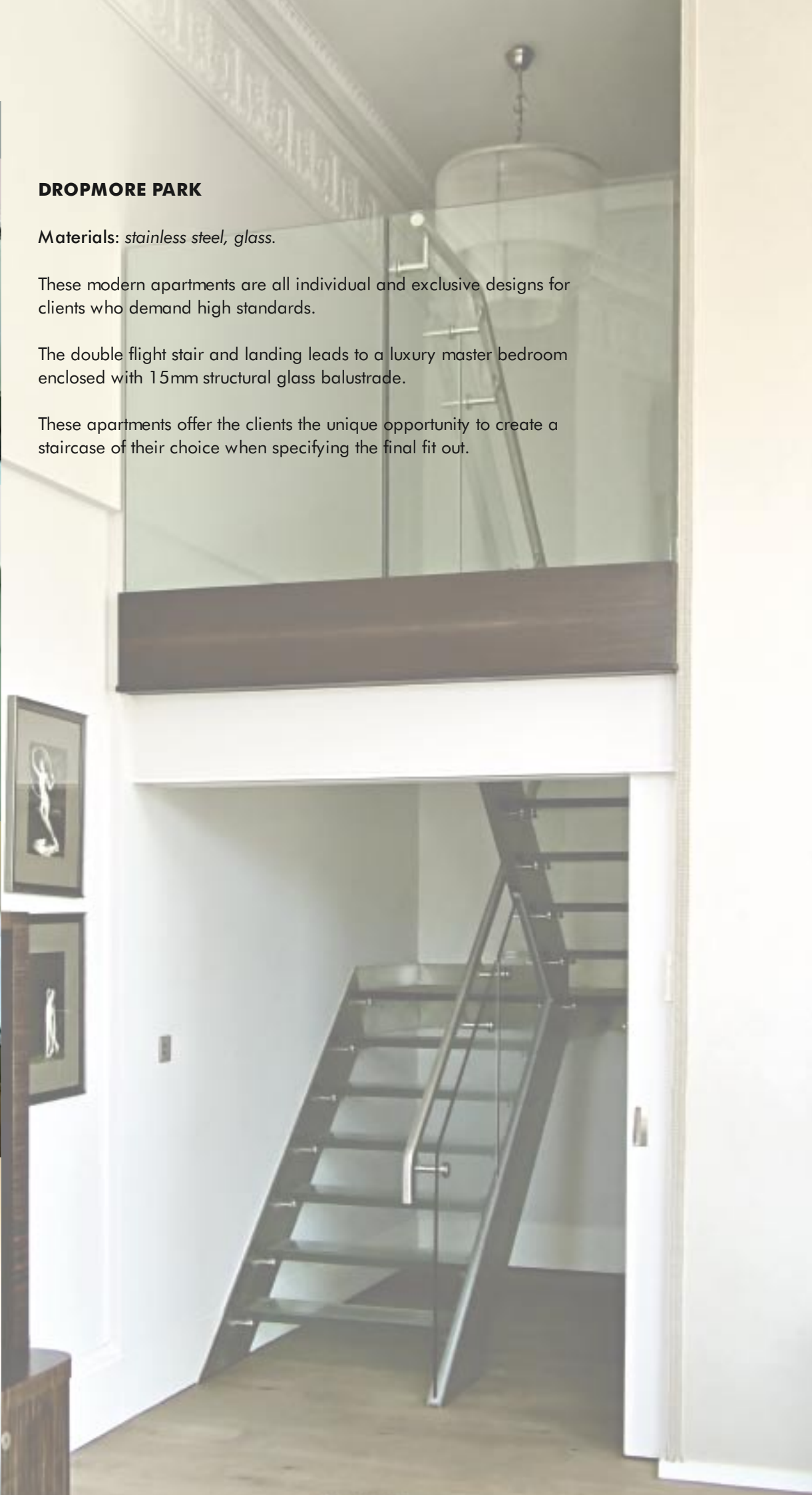
## DROPMORE PARK

Materials: *stainless steel, glass.*

These modern apartments are all individual and exclusive designs for clients who demand high standards.

The double flight stair and landing leads to a luxury master bedroom enclosed with 15mm structural glass balustrade.

These apartments offer the clients the unique opportunity to create a staircase of their choice when specifying the final fit out.







# CANAL

## O2 ARENA

Materials: *stainless steel, mild steel.*

More examples of the numerous handrails, balustrades and features around the newly refurbished Arena.

Various finishes were used including powder coating, polished stainless steel and polished brass.

The new internal regeneration has transformed the Arena as a leading leisure attraction and venue for major concerts and sporting events in the UK.



Commercial







CANAL



Workshop

PHOTOGRAPHER: ANDY HARGREAVES  
DESIGN & PRODUCED BY JEPHCOTT DESIGN





ALUMINUM TUBES OF CUTS ONLY

## SET US YOUR CHALLENGE

If your heart is set on your design vision, turn to CANAL; we use our heads to create bold, unique and enviable architectural metalwork that is expertly engineered in Britain:

Contact our technical sales team; 0115 986 6321,  
canal@canalengineering.co.uk.



| By Canal Engineering Limited

Tel: 0115 986 6321 [www.canal.eu.com](http://www.canal.eu.com)  
Lenton Lane, Nottingham, NG7 2PQ